

# PRODUCT RANGE

## 2022



## Duct Inline Fan

### Duct Inline Fan for Round Duct



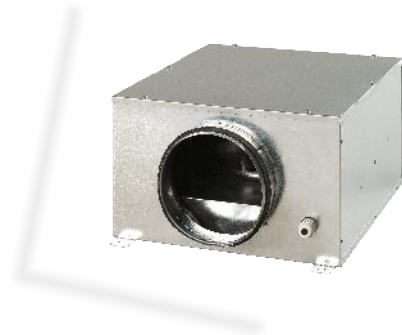
#### Circular Inline Fan (VSM)

- Available upto capacity range of 1880 cubic mtr/hr (1100 CFM)
- Used for supply/exhaust air application
- Dynamically balanced backward curved fan impeller
- Direct drive external rotor motor with ball bearing
- Motor equipped with overheat protection with auto restart
- Mounting brackets supplied as standard
- Fan can be supplied with Pre-fitted Hum-Free speed controller



#### Ceiling Inline Fan (CFVP)

- Silent operation
- Ideal for single area exhaust application
- Provided with decorative front panel & spring loaded backdraft damper
- Eliminates requirement of access door
- Impeller provided with direct drive external rotor motor
- Motor equipped with overheat protection with auto restart
- Fan can be supplied with pre-fitted Hum-Free speed controller



#### Sound Insulated Box Fan (VSIF)

- Recommended for areas with requirements for low noise level & limited mounting space
- Sound & heat insulated steel casing with non-flammable foam rubber
- Statically & dynamically balanced centrifugal backward curved impeller
- Direct drive external rotor motor with ball bearing & overheating protection with auto restart
- Fan can be supplied with Pre-fitted Hum-Free speed controller



#### Axial Duct Fan (SPAX)

- Made of UV resistant, high quality, durable ABS plastic
- Highly efficient impeller design with long service life
- Reliable & energy efficient motor with overheat protection
- Designed for continuous operation

## Mixed Flow Inline Duct Fan (VSP)



- Offers wide capabilities & high performance of axial & centrifugal fans material
- Low Flammable polypropylene material construction
- Special clamping system offer easy removal of Impeller/motor block without disturbing whole assembly
- Impeller design offers increased air flow circular velocity & higher pressures
- Thermal overheat protected external rotor motor with bearing life upto 40,000 hours

## DIRECT DRIVE BOX FANS (SGBF)



- Fan housing is constructed of Rigid Structural members & formed Steel Panels in 275 GSM Zinc Coating.
- Aluminium construction backward Inclined, Non-Overloading, Statically & Dynamically balanced Centrifugal Wheels provide maximum efficiency.
- Large Size Duct Collars provide reduced outlet velocity hence quieter operation.
- Permanently lubricated, sealed Ball Bearing (life in excess of 1,00,000 hours) IP-44 with Class-B Insulation motors.
- Access panel on both sides provide easy access to all internal components.
- OPTIONAL: 25 mm Thick Pre-Filter & Internal Acoustic Insulation of Panels.

## Axial Fan (AF)



- Low Pressure Axial Fans in steel casing with polymeric coating
- Used for supply & exhaust air application
- Highly reliable external rotor motor with built-in thermal overheat protection
- Motor ball bearing designed for 40,000 hour
- Provided with steel mounting plates

## Domestic Fans (VSDL)



- Modern Design & aesthetic look
- Made of UV resistant, high quality durable ABS plastic
- Reliable & energy efficient motor
- Equipped with overheating protection
- Available in 100 mm & 150 mm size

## Flexible Duct Connector



- Available in PVC coated & Silicon coated fabric
- Fire retardant PVC coated fabric conforming to class 'B' fire rating suitable up to temperature of 85°C
- Fire proof Silicon coated fabric tested & suitable upto temperature range of 270°C for 1 hour
- High anti-tear & tensile strength ensure longer life
- Available in fabric as well as with factory fitted side flanges having strong Airtight seam joints

## Constant Air Volume Regulator (CAVR)

Adjustable



- Easiest & economical way of accurate air balancing the system
- Includes adjustment device to manually adjust on site
- Can be used in supply or return air ducts
- System adjustment or balancing is not necessary
- Air flow remains constant regardless of any pressure variations
- Available range 20cfm to 400cfm

## Flexible Duct

### Non Insulated Flexible Duct (SFD-101)



- Made of a double lamination of metalized polyester film permanently bonded to a coated spring steel wire helix.
- No harmful substances are emitted during operation.
- Standard Length : 25 ft
- Available Sizes (dia in mm) : 100-500 (Step of 50mm)

### Insulated Flexible Duct (SFD-102)



- Model SFD - 102 ducts are made of a double lamination of polyester film permanently bonded to a coated spring steel wire helix with a blanket of fiberglass insulation with outer jacket made of double laminated metalized polyester film.
- No harmful substances are emitted during operation
- Standard Length : 25 ft
- Range : 100mm to 450mm dia (step of 50mm)
- Insulation Thickness : 25 mm
- Insulation Density : 16 kg/m<sup>3</sup>

## Semi Rigid Duct (SFD-201)



- Meets class 0 air duct requirements
- Constructed of a special Aluminium Alloy that prevents corrosion & metal fatigue.
- Fabricated on machine providing a continuous lock seam
- Can be installed with severe bends & in unlimited length while maintaining an unrestricted diameter.
- Standard Length : 10 ft.
- Available Sizes (dia in mm) : 75/100/125/150/200/250/300/350/400/450/500

## Fire Rated Insulated Flexible Ducts (SFD-112)



- These ducts are tested & approved as per BS-476 Part 5&6 for fire rating.
- Outer sleeve is made of combination of six layers of aluminum film & metalized polyester film.
- Inner sleeve is made of combination of six layers of aluminum film & metalized polyester film permanently bonded to coated spring steel wire helix.
- No harmful substances emitted during operation.
- Standard Length : 10 Feet
- Range : 100 mm to 450 mm (Step of 50 mm)
- Insulation Thickness : 25 mm
- Insulation Density : 16kg/m<sup>3</sup>

## Universal Hose Clamping System



- “Make-it-yourself” hose clamping system
- Band clamp of SS material
- Band clamp roll provided with template marking for easy use
- Hassle free clamping solution

## Duct Spigot



- Single piece steel construction
- Provide neat connection
- Faster installation

# Siemens Building Products



- 2-Way & 3-Way FCU Control Valves.
- 2-way & 3-Way AHU Globe / Ball Type Control Valves.
- Pressure Independent cum Balancing (PIBCV) Control Valves for FCU & AHU.
- Motorized Butterfly Valves.



SMART Thermostat for FCU, AHU & Universal DDC Controller.



SENSORS - Temperature, RH, Air, Velocity, Pressure, VOC, CO<sub>2</sub>, PM-2.5/10, Differential Pressure.  
Switches for Water & Air application.  
BTU Meter.



Motorized Damper Actuators with & Without Spring Return Function.  
Motorized Fire Damper Actuator with UL-555-S approval.



FCU Connection Kit with Control Valves.

## "Anergy" Products



- High rangeability control valves with multi seat construction & turn-down-ratio above 500
- Hydronic system components
  - » Pressure maintaining station
  - » Vacuum degasser with fully automated degassing & water make-up
  - » Micro-bubble air/dirt separator
  - » Suction dirt separator
  - » Closed expansion tanks & centrifugal air separators
  - » Auto air vents & test points
- Control valves for AHU's & FCU's
- Rotary actuators
- Sensors, transmitters & switches for temperature, RH, pressure, enthalpy

## Accessories

### Air Disc Valves



- Used for supply & exhaust air application
- Made of high quality ABS plastic
- Special aerodynamic design ensures uniform air distribution
- Construction allows for smooth air regulation
- Easy installation with fixing lugs & mounting flange in false ceiling / walls
- Available in 100 mm & 150 mm dia connection

### Metal Hoods - Cowl



- Protect exhaust / supply air vents from rain
- Made of polished durable stainless steel
- Provided with stainless steel mesh
- Provided with rubber seal for light contact with wall
- Available in 100 mm & 150 mm dia connection

### Supply / Exhaust Air Grill



- Used for supply & exhaust air application
- Made of high quality ABS plastic
- Construction allow for increase air pass
- Removable internal part construction allow easy mounting & cleaning
- Provided with round flange & protecting insect screen.
- Available in 100 mm & 150 mm dia connection



## **Sphere Equipments Pvt. Ltd.**

L-48-B, Malviya Nagar, New Delhi 110 017 (INDIA)

Tel.: +91 11 2665 3421, M : + 91 97738 09001 +91 97738 09002

Email : [info@sphereequipments.com](mailto:info@sphereequipments.com) | Website : [www.sphereequipments.com](http://www.sphereequipments.com)